



# ROOF SERVICES

For all your support and service needs



[www.roof-pro.co.uk](http://www.roof-pro.co.uk)

**Your Complete Support and Service Solution**

Design | Build | Support

# CONTENTS

WELCOME

WHY ROOF-PRO?

SERVICE &  
DESIGN SOLUTION

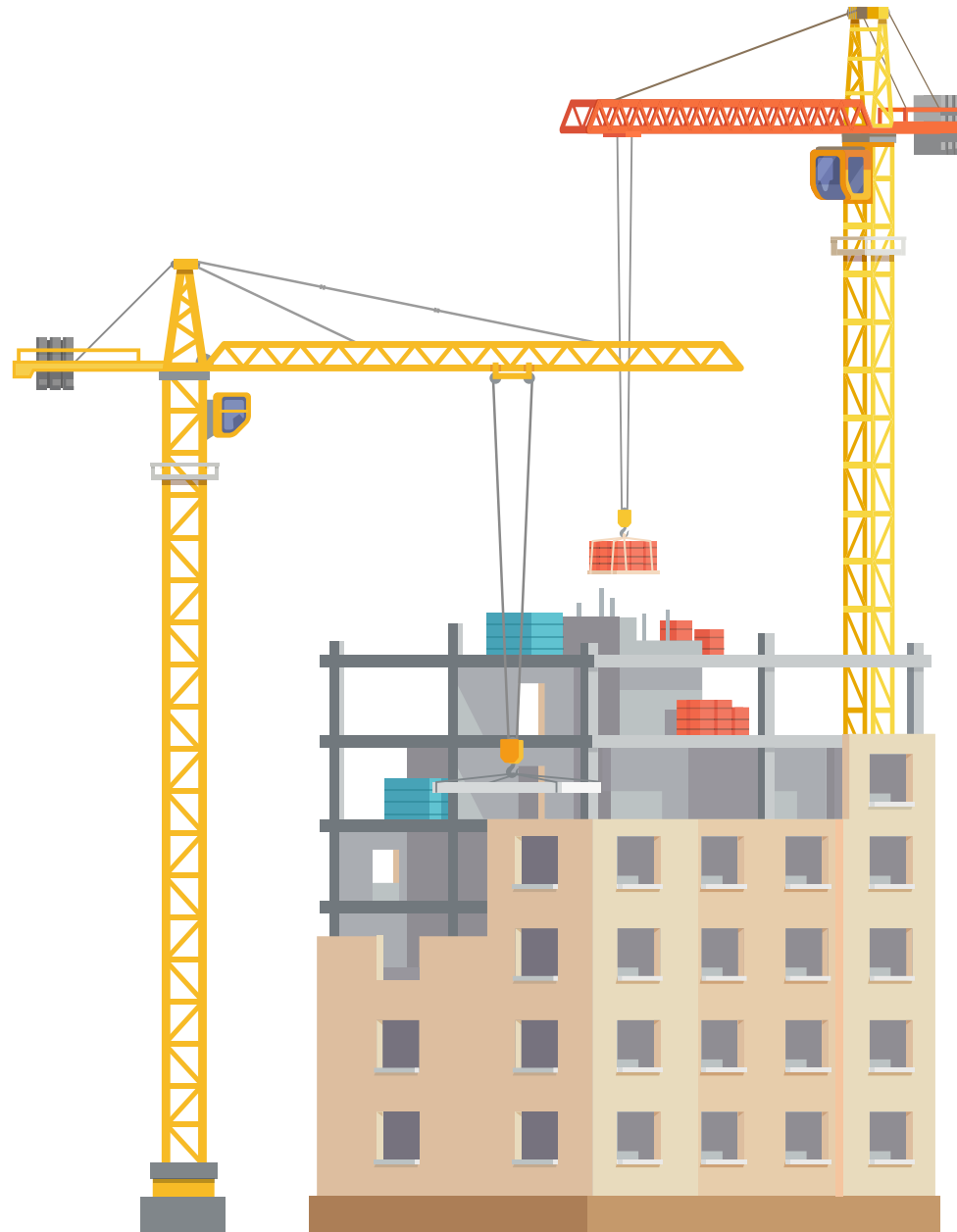
PRO-BASES

PRO-SUPPORT

PRO-FRAME

PRO-STEP

PRO-WALK



PRO-CLIMB

PRO-RISER

PRO-NEK

PRO-EXP &  
FLAMLIN

SURE-FOOT

PRO-GUARD

PV SOLAR SYSTEMS

ANCILLARY

# WELCOME TO ROOF-PRO

Thank you for taking the time to visit us!

We want to share with you a little bit about us, our product solutions, and the service we personalise to you.

We are a trusted supplier of plant support and roof access solutions, offering a range of products for the flat roofing market.

Our team of knowledgeable like-minded people will work with you to specify the most suitable solution for the unique needs of your project and will be there throughout the design and construction process.

Our aim is to provide quality sustainable building solutions which give long-term peace of mind, supported by our technical expertise and construction knowledge.

We are committed to continual development and, along with ISO14001 Environmental Management Standard, ISO9001 provides the tools to monitor and feedback information from all areas of the business to ensure you get a first-class service.

If you wish to hear more about our solutions and how we are working towards a better future, then please do not hesitate to get in touch with us at

**cad@roof-pro.co.uk**

Thank you again for your time.



## Your Complete Support and Service Solution

Design



Build



Support



Proud to have received London Stock Exchange's Green Economy Mark











# WHY ROOF-PRO?

Since 1995, Roof-Pro has specialised in the development and provision of a comprehensive range of free-standing, non-penetrative building services support solutions, edge protection systems, and expansion products for flat roof refurbishment and new build projects.

Our Technical Team will provide a complete design, tailored to individual project requirements, along with all supporting specification, CAD, and product-specific documentation.

Roof-Pro systems are designed to provide a futureproof solution for supporting building services.

-  **The Right System Choice**  
With our varied and extensive range of products, we can always meet your project's needs with an appropriate solution.
-  **Surveying**  
Site or office visit to evaluate your needs and detail your requirements.
-  **Estimating**  
A detailed project costing provided.
-  **Efficiently Designed**  
We will assist through all design stages, by collaborating with the relevant parties to meet your project's requirements and support you throughout with our comprehensive technical advice.
-  **Co-ordination**  
With key members of the project team.
-  **Delivery**  
Working closely with our logistic partners we make sure you have your goods on site, on time.
-  **Post-Project Handover**  
For all you need to know about your Roof-Pro products and maintenance requirements.
-  **After-sales Support Service**  
Should you need us to support you in the future.

# THE ROOF-PRO SERVICE

For full delivery of system objectives, our Three-Point Design Check represents an undertaking that Roof-Pro systems meet the high quality standards expected by our clients. The checks assess stability and design, and also ensure that future requirements are incorporated.

## OUR THREE-POINT DESIGN CHECK INCLUDES:

### 1. STABILITY

We make calculations of your services stability, including wind loadings.

### 2. LOAD MANAGEMENT

We design our supports within the structural and waterproofing assembly limits set by the structural consultants.

### 3. BUILDING CLEARANCE

We make considerations in our designs for vertical and horizontal clearance for safety, aesthetic and future roofing maintenance purposes.



## CONTACT US:

For Specifications, Technical, Project Quotations, Customer Service and Sales Orders

 +44 (0)1744 648400

 cad@roof-pro.co.uk

[www.roof-pro.co.uk](http://www.roof-pro.co.uk)

# OUR TECHNICAL AND SUPPORT SERVICE

We provide our clients with a comprehensive technical and support service, including:

## Technical Design and Specification support

Engagement at the early stages of design from us ensures your project objectives are delivered.

### Aftersales

O & M documentation with liaison and consultation on long term maintenance issues and re-roofing requirements.



### Specifications, CAD Detail Drawings and BIM objects

We ensure the correct solutions are proposed by providing written specification and detailed drawings to assist with design.

### Technical Expertise

We recommend and design the most appropriate system for your project and provide technical support and advice, ensuring the building owner receives a superior and cost effective solution for the management rooftop services.



### Calculations

Load management, global loads and wind uplift calculations are available.

### Cost plan and tender stage assistance

Our estimating team will provide budget costings for the solutions proposed.



# OUR TOTAL DESIGN SOLUTION

Issues can arise during project installation if certain details have not been designed, considered, or allowed for during the initial design process, or occasionally - if the wrong solution has been proposed entirely.

Our experienced technical team will work with you from the early stages of design to ensure we offer the right solution for your project needs, and not what is right for us. We do this by providing our 'Total Design Solution'.

## 01. Client Brief

We consider and discuss the project requirements in conjunction with the client to provide a clear picture of the scope of works at the design stage.



## 03. Specification

We will provide specifications, detailed drawings, structural loads, and wind load calculations in accordance with the agreed solution and continual support throughout as required.



## 05. Site Pack

Once installation is complete, the client is then issued a full site pack.



## 02. Solution Design

Practical solutions to deliver the right specification and guidance on common problems and how to avoid them are deliberated. Including building structure, design compliance, durability, load management, and budget.



Site Supervision

## 04. Site Assistance

Where required, our site technicians can assist inexperienced installers at the commencement of new projects.

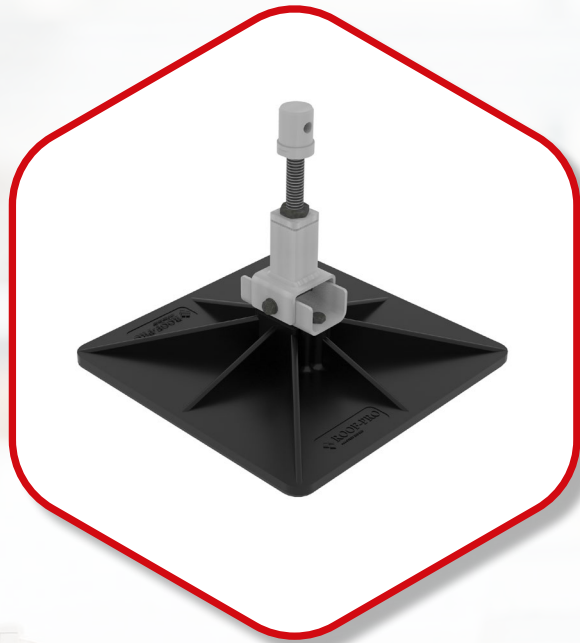


# PRO-BASES

A variety of Roof-Pro bases are strategically utilised with the support frames to manage the load and provide maximum stability without membrane penetration.

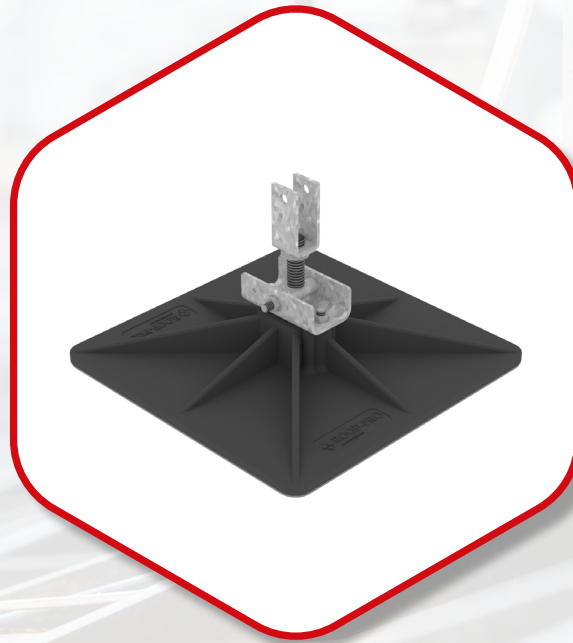
The bases incorporate a pivot and threaded adjuster for ensuring maximum stability, including on roofs with incorporated falls. Pivot allows for 8 degrees of adjustment and various height adjustments are available.

No penetrations to the roofing membrane. Facilitates airtight roof design - no thermal bridging (Part L).



## Threaded Pivot (TP)

8 degree adjustment for roof gradient  
100mm height adjustment for uneven surfaces



## Low Threaded Pivot (LTP)

8 degree adjustment for roof gradient  
50mm height adjustment for uneven surfaces



## Low Thread (LT)

50mm height adjustment for uneven surfaces  
(None pivoting)

# SUPPORT SOLUTIONS

## PRO-SUPPORT SYSTEM

### FEATURES & BENEFITS

- ✓ Each frame is engineered to the requirements of the roof and designed to comply with structural loadings
- ✓ No penetrative fixings and easy to level
- ✓ Semi-constructed offering reduced install time
- ✓ Pivot and threaded support bases can be adjusted on site and moved easily for maintenance access



### TECHNICAL DATA

- Polypropylene base
- Rubber isolation mat
- Galvanised steel for corrosion resistance
- Internal & external options
- Various beam options
- Base adjustment for sloped surfaces
- Multiple base options

#### SYSTEM DESIGN

The frame systems detailed are the most common configurations of each system for roof top applications. We will advise on selecting the best system and if any further design configurations are required. In addition to the weight and dimensions of the item to be supported, other useful information includes:

#### ACCESS

- Target heights
- Dimensions
- Obstructions

#### ROOF

- Structural limitations
- Roof fall and direction
- Obstruction details



# SUPPORT SOLUTIONS

## PRO-SUPPORT SYSTEM



### LARGE UNITS

For heavy units, a suitable support solution that works with the roof design is critical for distributing the services weight. The RP-POD utilises a galvanised steel pod arrangement, facilitating the distribution of the point loads over four interconnected support bases.

The POD frame is supported by the flexibility of the pivot and threaded adjusters which keep the equipment level and clear from the roof surface.



### SMALL TO MEDIUM UNITS

The RP-PF system supports plant that requires a broader support base to give greater stability. The system works by a series of connected frames with connecting sliding beams (CSB) to give flexibility for unit size.

Typical equipment that may be supported on this frame are AHUs and ASHPs. The particular frame arrangement spreads the loads over a number of bases.

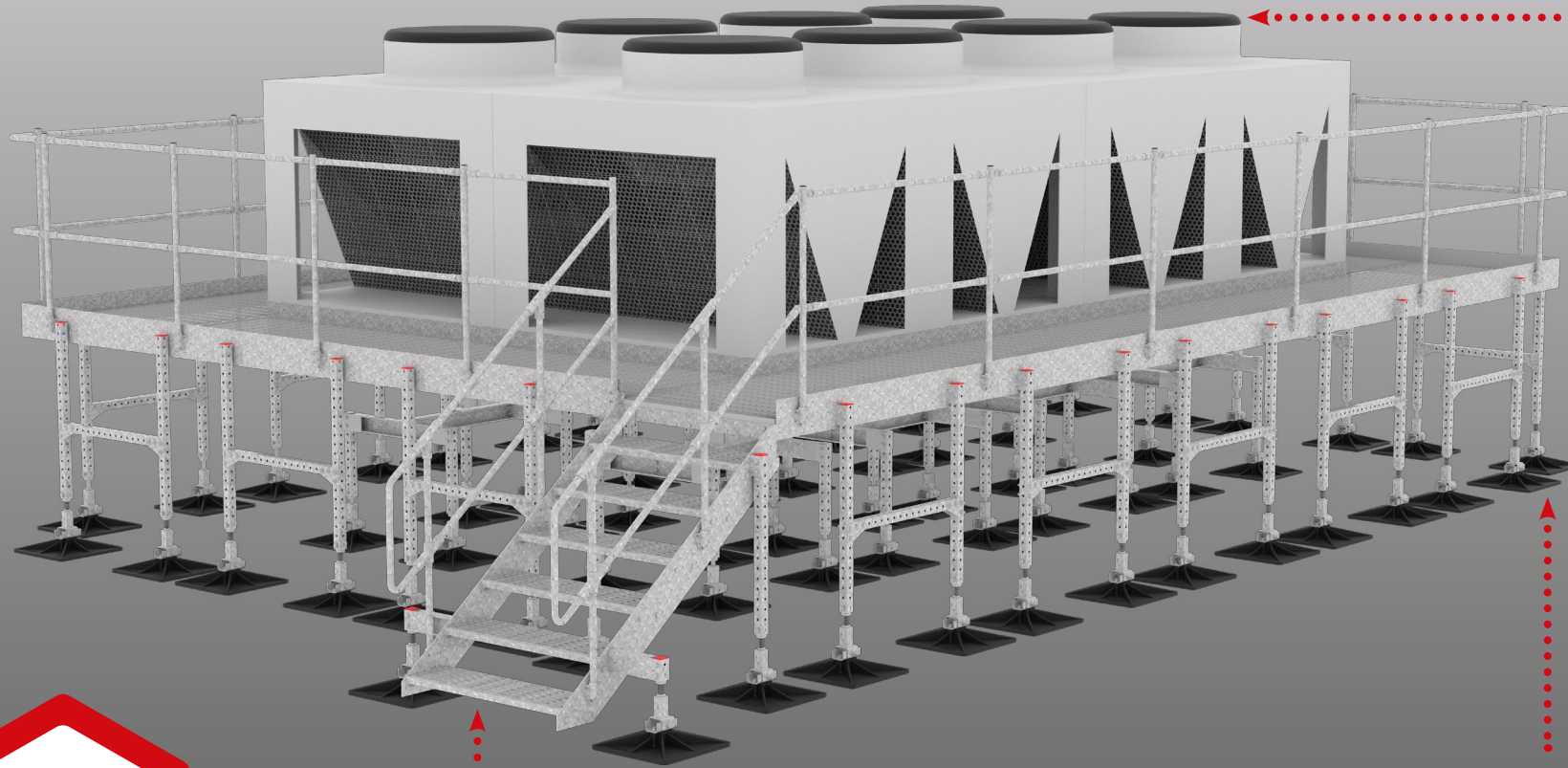


### CONDENSER UNITS

The Roof-Pro range of condenser supports comprises various frames and connecting slide beams to provide a flexible support system. The PF designs can support multiple condensers and can be used in combination for larger installations. Each frame design supports quick and simple installation requiring no drilling or on-site fabrication, just standard fixings. Standard design options are available, or we can design a support system to suit.

# BESPOKE SUPPORT SOLUTIONS

## PRO-SUPPORT SYSTEM



**Project  
Specific  
Design**

**Bespoke  
Access  
Solutions**

**Full  
Loading  
Calculations**

# SUPPORT SOLUTIONS

## PRO-FRAME SYSTEM

### FEATURES & BENEFITS

- ✓ Each frame is engineered to the requirements of the roof and designed to support cable, pipes, and ducts
- ✓ No penetrative fixings and easy to level
- ✓ Semi-constructed offering reduced install time
- ✓ Pivot and threaded support bases can be adjusted on site and moved easily for maintenance access

### TECHNICAL DATA

- Polypropylene base
- Rubber isolation mat
- Galvanised steel for corrosion resistance
- Various support options
- Base adjustment for sloped surfaces
- Multiple base options



### SYSTEM DESIGN

The frame systems detailed are the most common configurations of each system for roof top applications. We will advise on selecting the best system and if any further design configurations are required. In addition to the weight and dimensions of the item to be supported, other useful information includes:



### ACCESS

- Target heights
- Dimensions
- Obstructions



### ROOF

- Structural limitations
- Roof fall and direction
- Obstruction details

# PRO-FRAME SYSTEM

The Roof-Pro range of cable, pipe and duct support solutions utilise our specialist components to ensure secure fixing and stability. The non-penetrative base supports aid flexibility in the positioning and installation of services, facilitating future re-routing and maintenance access. Bespoke options can be designed to accommodate your project's dimensions with multiple cable, pipe and duct supports.



## TAB-C (Cable)

The TAB-C utilises a broad base that provides effective non-penetrative support for cable tray runs carrying low pipe and cable volumes.

Installation is simple with each cable tray support comprising galvanised studding that permits locating and levelling of service runs.



## TAB-P (Pipe)

For small to medium pipes the TAB-P system provides support for adjustable collars and threaded rods. The pipe suspension system enables pipe levels to be finitely adjusted on site, so that the pipes can retain the required clearance regardless of the fall on the roof. The galvanised frames provide the hanging system with a sturdy framework utilising a threaded adjuster pivoting leg for frame height adjustments.



## TAB-D (Duct)

The TAB-D system clamps the duct at the target height utilising a solid base support with twin threaded uprights. The system allows for changes in height and variation in duct sizes. There are three standard support beam sizes of 500mm, 750mm, and 1000mm. Bespoke options are available.

# ACCESS SOLUTIONS

## PRO-STEP SYSTEM

### FEATURES & BENEFITS

- ✓ Free movement around the roof overcoming impeding features that may cause injury
- ✓ Each step-over is engineered to the requirements of the roof and designed to comply with BS 5395-1:2010 and BS EN ISO 14122-3:2016
- ✓ No penetrative fixings and easy to level
- ✓ Pivot and threaded support bases can be adjusted on site and moved easily for maintenance access
- ✓ Semi-constructed offering reduced install time

### TECHNICAL DATA

- Polypropylene base
- Rubber isolation mat
- Galvanised steel for corrosion resistance
- Internal & external options
- Slip resistant steps
- Added stability provided above 6 steps
- Base adjustment for sloped surfaces
- Safe access over an obstacle



### SYSTEM DESIGN

The access systems detailed are the most common configurations of each system for roof top applications. We will advise on selecting the best access system and if any further design configurations are required. Information that will help us to assist you includes:



### ACCESS

- British Standards requirements
- Dimensions
- Obstructions
- Density of traffic



### ROOF

- Structural limitations
- Roof fall and direction
- Obstruction details

# ACCESS SOLUTIONS

## PRO-STEP SYSTEM

### FEATURES & BENEFITS

- ✓ Free movement around the roof overcoming impeding features that may cause injury
- ✓ Each step-over is engineered to the requirements of the roof and designed to comply with BS 5395-1:2010 and BS EN ISO 14122-3:2016
- ✓ No penetrative fixings and easy to level
- ✓ Pivot and threaded support bases can be adjusted on site and moved easily for maintenance access
- ✓ Semi-constructed offering reduced install time

### TECHNICAL DATA

- Polypropylene base
- Rubber isolation mat
- Galvanised steel for corrosion resistance
- Internal & external options
- Slip resistant steps
- Added stability provided above 6 steps
- Base adjustment for sloped surfaces
- Safe access over an obstacle



### SYSTEM DESIGN

The access systems detailed are the most common configurations of each system for roof top applications. We will advise on selecting the best access system and if any further design configurations are required. Information that will help us to assist you includes:



### ACCESS

- British Standards requirements
- Dimensions
- Obstructions
- Density of traffic



### ROOF

- Structural limitations
- Roof fall and direction
- Obstruction details

# ACCESS SOLUTIONS

## PRO-STEP SYSTEM

### FEATURES & BENEFITS

- ✓ Free movement around the roof overcoming impeding features that may cause injury
- ✓ Each step-over is engineered to the requirements of the roof and designed to comply with BS 5395-1:2010 and BS EN ISO 14122-3:2016
- ✓ No penetrative fixings and easy to level
- ✓ Pivot and threaded support bases can be adjusted on site and moved easily for maintenance access
- ✓ Semi-constructed offering reduced install time



### TECHNICAL DATA

- Polypropylene base
- Rubber isolation mat
- Galvanised steel for corrosion resistance
- Internal & external options
- Slip resistant steps
- Added stability provided above 6 steps
- Base adjustment for sloped surfaces
- Safe access over an obstacle in challenging locations

#### SYSTEM DESIGN

The access systems detailed are the most common configurations of each system for roof top applications. We will advise on selecting the best access system and if any further design configurations are required. Information that will help us to assist you includes:

#### ACCESS

- British Standards requirements
- Dimensions
- Obstructions
- Density of traffic

#### ROOF

- Structural limitations
- Roof fall and direction
- Obstruction details

# ACCESS SOLUTIONS

## PRO-WALK SYSTEM

### FEATURES & BENEFITS

- ✓ Modular systems
- ✓ Designed to comply with British Standards
- ✓ Available in lightweight aluminium or high strength galvanised mild steel
- ✓ Full range of access and security gates available
- ✓ Semi-constructed offering reduced install time



### TECHNICAL DATA

- Variations available for all roof types
- Steel and GRP grid options available

#### SYSTEM DESIGN

The access systems detailed are the most common configurations of each system for roof top applications. We will advise on selecting the best access system and if any further design configurations are required. Information that will help us to assist you includes:

#### ACCESS

- British Standards requirements
- Dimensions
- Obstructions
- Density of traffic

#### ROOF

- Structural limitations
- Roof fall and direction
- Obstruction details

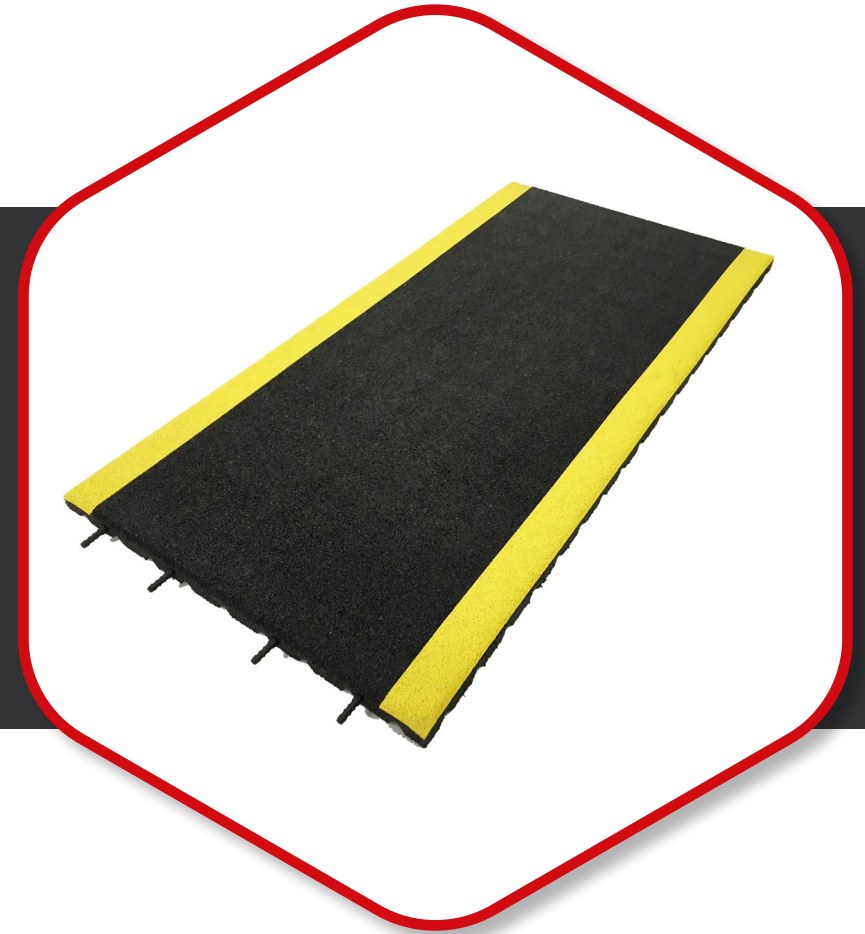


# ACCESS SOLUTIONS

## PRO-WALK "R" SYSTEM

### FEATURES & BENEFITS

- ✓ Granulate bound with PU adhesive
- ✓ Porous self-draining system
- ✓ Slip resistant
- ✓ Fully recyclable
- ✓ Easy construction



### TECHNICAL DATA

- Suitable for most roof build-ups
- 20kg per m<sup>2</sup>
- Efl as per EN 13501-1 & BROOF (f1) as per EN13501-1
- Water permeable to 350mm per hour EN 12616

#### SYSTEM DESIGN

This system comprises of multiple tiles of varying shapes to create a seamless walkway across the roof. Information that will help us to assist you includes:

#### ACCESS

- British Standards requirements
- Dimensions
- Obstructions
- Density of traffic

#### ROOF

- Structural limitations
- Roof fall and direction
- Obstruction details

# ACCESS SOLUTIONS

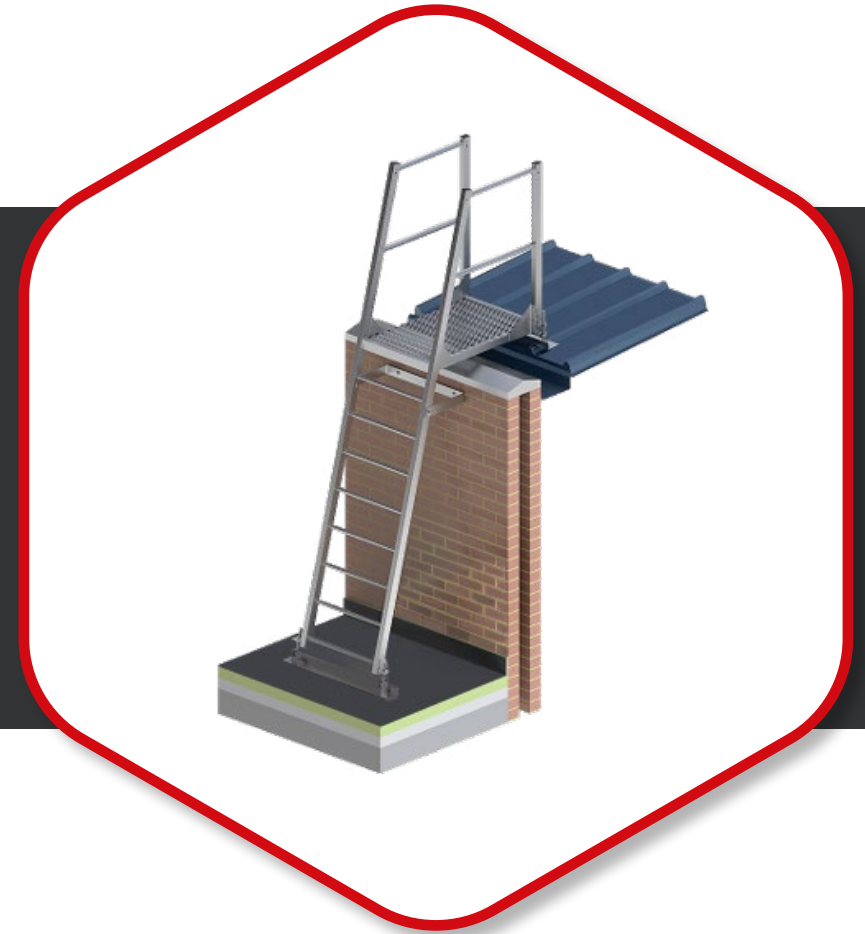
## PRO-CLIMB SYSTEM

### FEATURES & BENEFITS

- ✓ Modular systems
- ✓ Designed to comply with British Standards
- ✓ Available in lightweight aluminium or high strength galvanised mild steel
- ✓ Full range of access and security gates available
- ✓ Semi-constructed offering reduced install time

### TECHNICAL DATA

- Maximum 2m height
- Complies with BS 4211:2005+A1:2008



### SYSTEM DESIGN

The access systems detailed are the most common configurations of each system for roof top applications. We will advise on selecting the best access system and if any further design configurations are required. Information that will help us to assist you includes:

### ACCESS

- British Standards requirements
- Dimensions
- Obstructions
- Density of traffic

### ROOF

- Structural limitations
- Roof fall and direction
- Obstruction details

# ACCESS SOLUTIONS

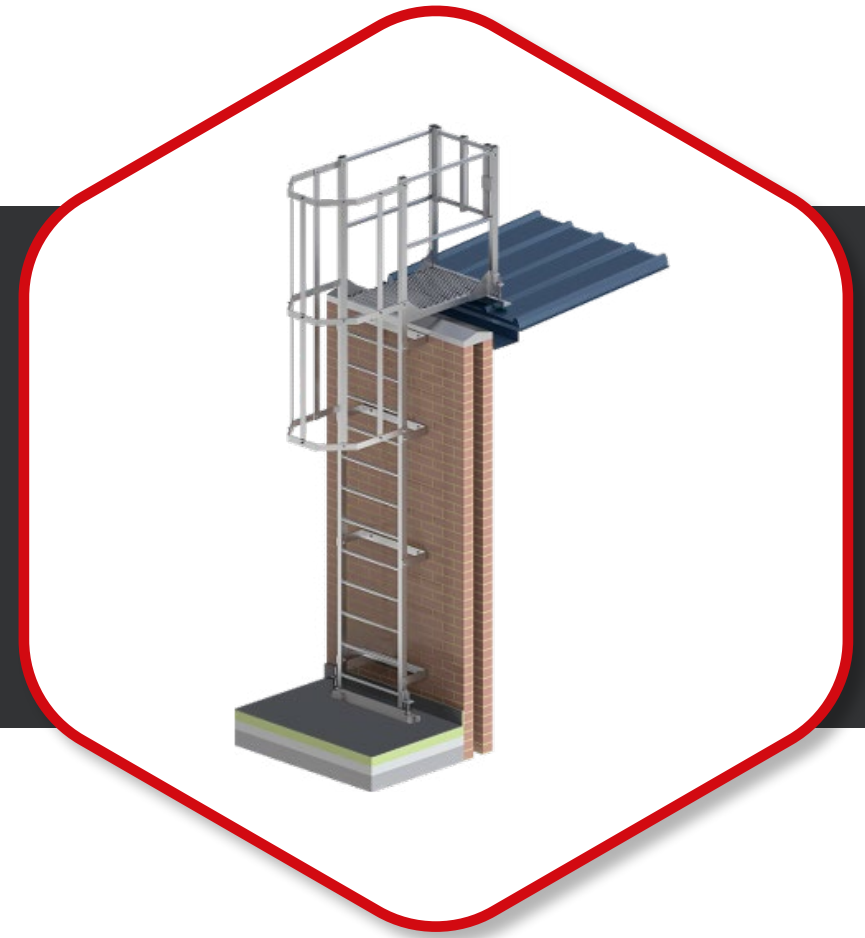
## PRO-CLIMB SYSTEM

### FEATURES & BENEFITS

- ✓ Modular systems
- ✓ Designed to comply with British Standards
- ✓ Available in lightweight aluminium or high strength galvanised mild steel
- ✓ Full range of access and security gates available
- ✓ Semi-constructed offering reduced install time

### TECHNICAL DATA

- Available up to 10m in height
- Complies with BS 4211:2005+A1:2008



### SYSTEM DESIGN

The access systems detailed are the most common configurations of each system for roof top applications. We will advise on selecting the best access system and if any further design configurations are required. Information that will help us to assist you includes:

### ACCESS

- British Standards requirements
- Dimensions
- Obstructions
- Density of traffic

### ROOF

- Structural limitations
- Roof fall and direction
- Obstruction details

# ACCESS SOLUTIONS

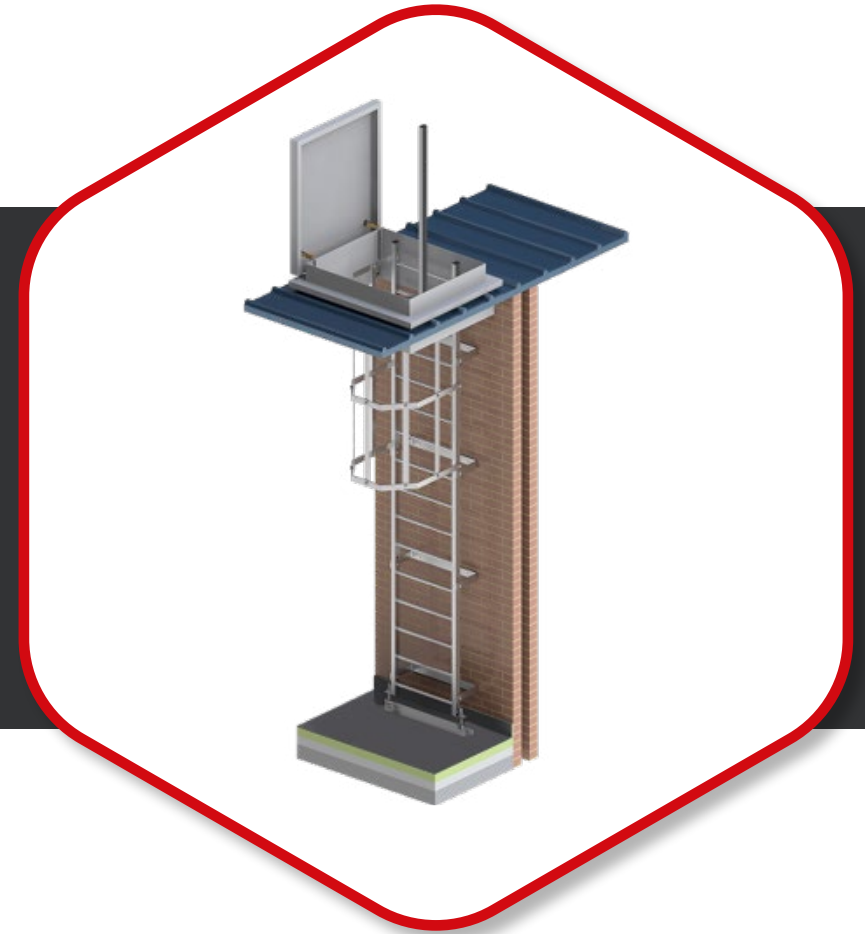
## PRO-CLIMB SYSTEM

### FEATURES & BENEFITS

- ✓ Modular systems
- ✓ Designed to comply with British Standards
- ✓ Available in lightweight aluminium or high strength galvanised mild steel
- ✓ Full range of access and security gates available
- ✓ Semi-constructed offering reduced install time

### TECHNICAL DATA

- 2m to 10m height
- Complies with BS 4211:2005+A1:2008
- Internal & external options



### SYSTEM DESIGN

The access systems detailed are the most common configurations of each system for roof top applications. We will advise on selecting the best access system and if any further design configurations are required. Information that will help us to assist you includes:

### ACCESS

- British Standards requirements
- Dimensions
- Obstructions
- Density of traffic

### ROOF

- Structural limitations
- Roof fall and direction
- Obstruction details

# PENETRATION SOLUTIONS

## PRO-RISER SYSTEM

### FEATURES & BENEFITS

- ✓ Watertight & insulated system
- ✓ Easily flashed with roof membrane systems
- ✓ Aluminium construction
- ✓ Easy access
- ✓ Multiple cable openings
- ✓ 3 Standard sizes plus bespoke options available



### TECHNICAL DATA

- Aluminium components
- No penetration
- 3-piece construction
- Lightweight system
- Single application

Standard Models	Aperture Opening	Deck Opening
PP3 1875	180 x 750 mm	415 x 750 mm
PP3 2020	200 x 200 mm	200 x 200 mm
PP3 3040	400 x 400 mm	300 x 400 mm
*Bespoke options available		

#### SYSTEM DESIGN

The penetrative systems detailed are the most common configurations of each system for roof top applications. We will advise on selecting the best solution and if any further design configurations are required. Information that will help us to assist you includes:

#### ACCESS

- Target heights
- Opening dimensions
- Obstructions

#### ROOF

- Structural build-up
- Roof system configurations
- Access points

# STANDARD PRO-RISERS

The PP-3 provides a service access point to run cables and pipes into the building.

The PP-3 is the larger of the two access systems and comes in 3 standard sizes.

Bespoke options can be designed to accommodate your project's dimensions along with multiple opening options and also 'letterbox' styles.



## PP3-1875

180mm high x 755mm wide

This unit is suitable for a large number of refrigeration lines, cable trays/ladders or up to 4/no. 50mm diameter medium F & R pipes (including insulation and waterproofing).



## PP3-2020

200mm high x 200 wide

This unit is suitable for a large number of refrigeration lines double stacked, cable trays/ladders or up to 4/no. 80mm max. diameter small pipes (including insulation and waterproofing).



## PP3-3040

300mm high x 400mm wide

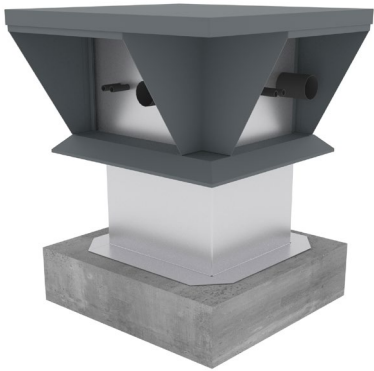
This unit is suitable for a large number of refrigeration lines double stacked, cable trays/ladders or up to 2/no. 175mm diameter medium F & R pipes (including insulation and waterproofing).

# BESPOKE/RETROFIT PRO-RISERS

Our bespoke risers provide a service access point to run cables, pipes, and/or ducts into the building.

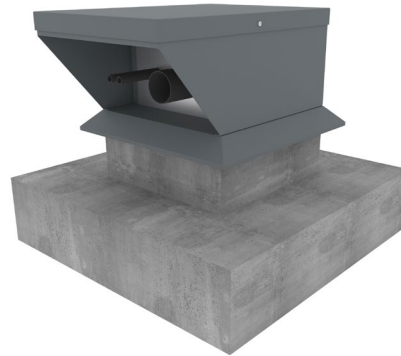
Bespoke solutions can be designed to accommodate most project requirements with varying opening dimensions and directions.

Please contact us with your project details and our design team will assist to provide the best solution.



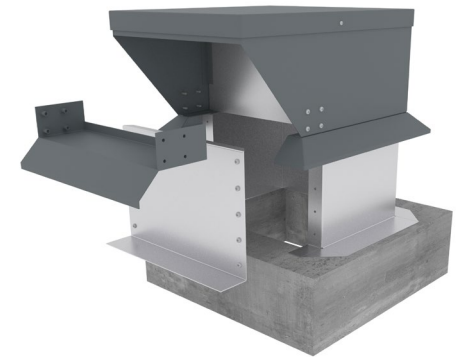
## MULTI ENTRY

Risers can be fabricated with multiple entry apertures to provide an economical solution for multi-directional service runs across the roof.



## EXISTING KERB

Where the roof has existing kerbs of suitable height, both standard and bespoke risers can be provided with or without the aluminium kerb to provide a more cost-effective solution.



## RETROFIT UNITS

On refurbishment projects where existing services are already in place, our retrofit units can be adapted to fit around the existing items. A height adjustable kerb and a removable front cill, allow for a perfect weathertight solution without the need for any decommissioning works. Opposing entry may be accommodated.

# PENETRATION SOLUTIONS

## PRO-NEK SYSTEM

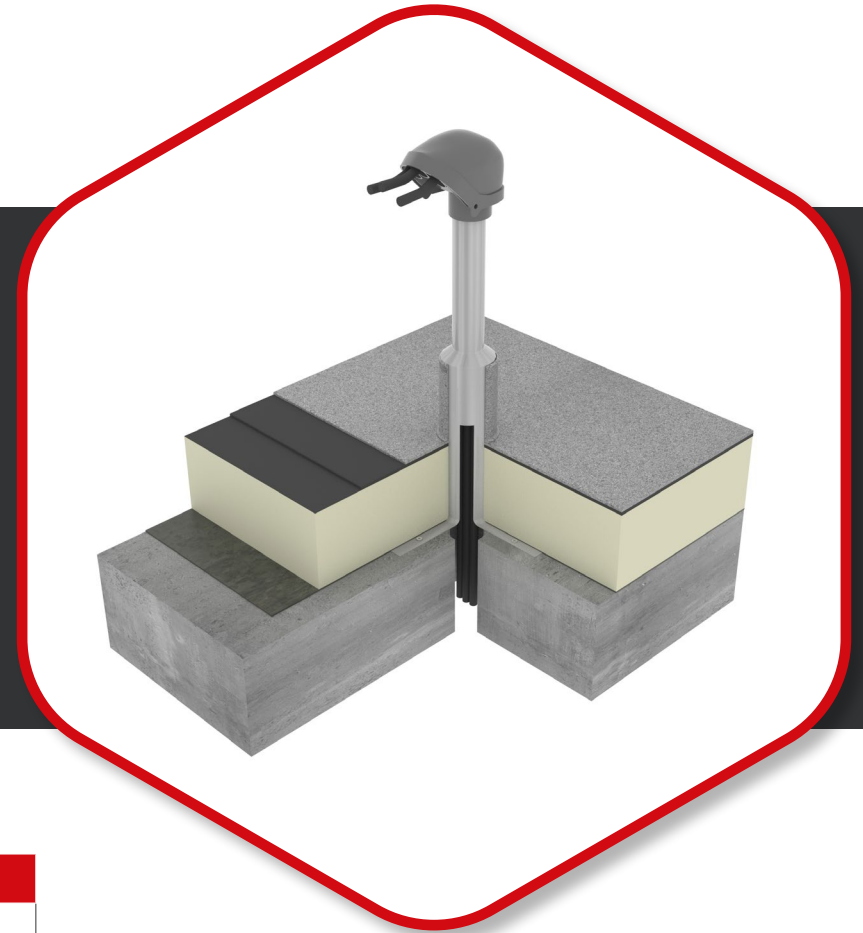
### FEATURES & BENEFITS

- ✓ Watertight conduit system
- ✓ Easily flashed with roof membrane systems
- ✓ Aluminium base standpipe
- ✓ Solvent welded PVC hooded outlet
- ✓ 3 Cable openings plus 3 additional knockouts
- ✓ Eliminates call backs

### TECHNICAL DATA

- Aluminium base
- No penetration
- 2-piece construction
- Lightweight system
- Single application

Dimensions	mm
Overall height	578
Flange diameter	298
Opening above deck	527



### SYSTEM DESIGN

The penetrative systems detailed are the most common configurations of each system for roof top applications. We will advise on selecting the best solution and if any further design configurations are required. Information that will help us to assist you includes:



### ACCESS

- Target heights
- Opening dimensions
- Obstructions



### ROOF

- Structural build-up
- Roof system configurations
- Access points

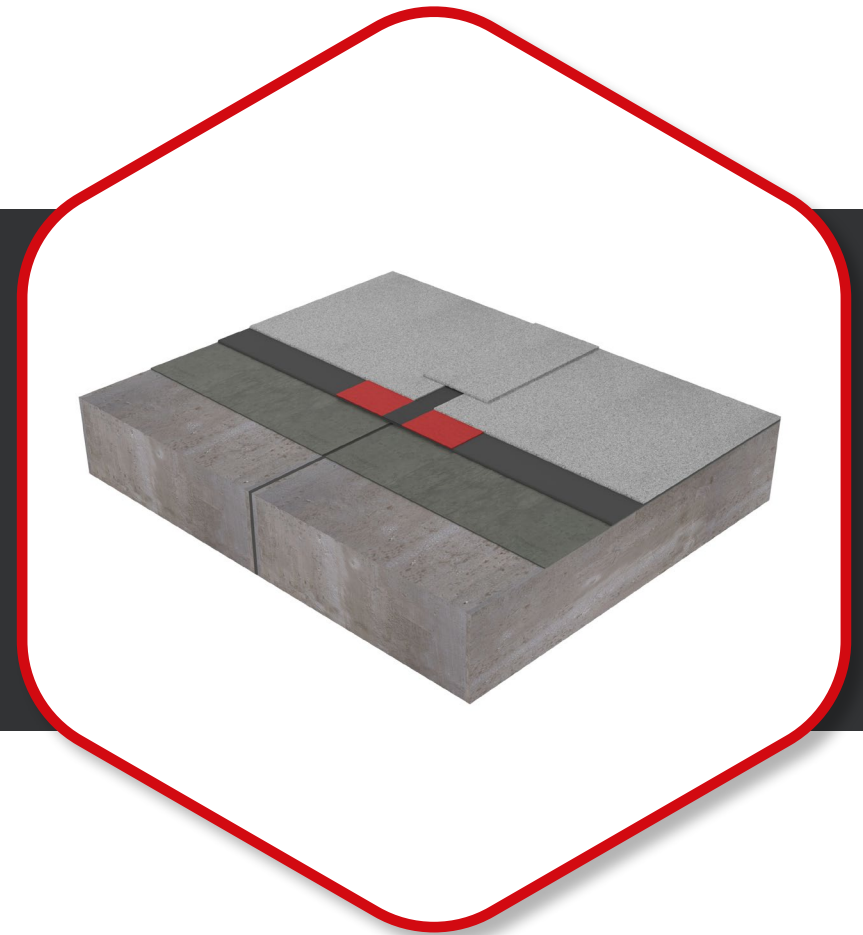


# EXPANSION JOINT SYSTEM

## PRO-EXP & FLAMLIN

### FEATURES & BENEFITS

- ✓ Tapes and moulded parts are supplied as readymade systems
- ✓ Cost-effective installation thanks to prefabricated, precisely fitting expansion joint tapes
- ✓ Follow any joint course without problems
- ✓ Flush installation without loops and beads
- ✓ No complex substructures thanks to "sandwich installation"
- ✓ Very high resistance to building vibrations, e.g. during earthquakes
- ✓ Construction vulcanisation possible
- ✓ Special metal connectors for connections to sheet metal work



Features	Unit	Test Standard	Test Values
Elastomer Base		ISO 1629	IIR
Density	g/cm <sup>3</sup>	DIN EN ISO 1183-1	1.47 - 1.51
Hardness	Shore A	DIN 53 505	55
Tensile Strength	N/mm <sup>2</sup>	DIN 53 504	> 5
Elongation at Break	%	DIN 53 504	> 600
Tear Resistance	N/mm	DIN 53 507	> 8
Water Vapour Permeability at Thickness of 2.6mm	g/m <sup>2</sup> x day my value	Based on DIN 53122	0.16 approx. 270,000
Fire Behaviour		DIN EN 13501-1	Building material class E

### SYSTEM DESIGN

A joint tape system pre-assembled at the factory for quick and safe installation. The vulcanisation of all shaped parts guarantees a homogeneous joint tape system without weak points.



### WATERPROOFING SYSTEMS

Compatible with most waterproofing systems, system specific advice available



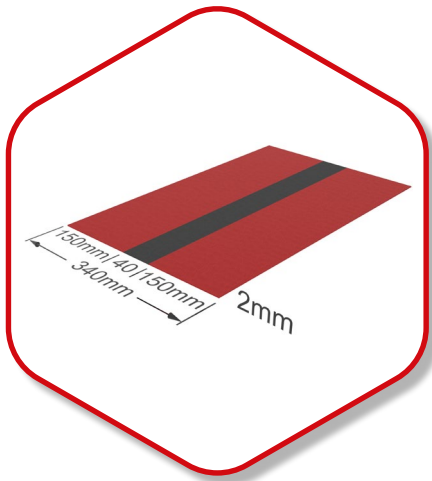
### ROOF EXPOSURE

Components on buildings are constantly exposed to loads such as temperature fluctuations and physical conditions. These have an effect on the volume and the characteristics of the materials used, as well as on the construction materials, and can cause signs of wear or cracking with disastrous consequences.

# EXPANSION JOINT SYSTEM

## PRO-EXP & FLAMLIN

The elastomer material is based on a butyl material with low gas permeability, good resistance to heat, cold, oxygen and ozone, very good ageing resistance, very good long-term heat resistance (up to +90°C) and very good flexibility at low temperatures (down to -40°C). Furthermore, the butyl is resistant to alkalis, diluted acids and salt solutions, to water and water vapour, and to polar solvents such as alcohol and ketones. Its resistance to non-polar plasticisers and solvents such as mineral oils, petrol, fuels and aromatics such as toluene is low. Constant contact with these materials should be avoided.



### ProEXP 20

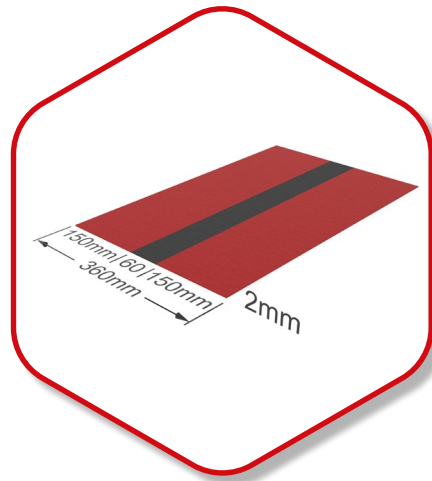
There are different product versions available depending on the 3-dimensional joint movement to be expected.

**X** max. ± 20mm

**Y** max. ± 20mm

**Z** max. ± 20mm

**Vr** = 34mm



### ProEXP 40

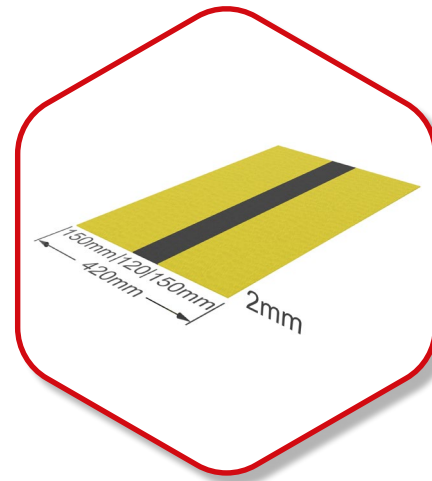
There are different product versions available depending on the 3-dimensional joint movement to be expected.

**X** max. ± 40mm

**Y** max. ± 40mm

**Z** max. ± 40mm

**Vr** = 69mm



### FlamLINE 100

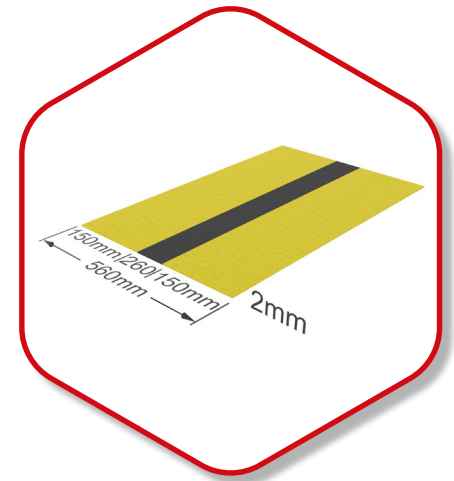
There are different product versions available depending on the 3-dimensional joint movement to be expected.

**X** max. ± 100mm

**Y** max. ± 100mm

**Z** max. ± 100mm

**Vr** = 173mm



### FlamLINE 240

There are different product versions available depending on the 3-dimensional joint movement to be expected.

**X** max. ± 240mm

**Y** max. ± 240mm

**Z** max. ± 240mm

**Vr** = 415mm

# SURE-FOOT

## MODULAR SUPPORT SYSTEM



### FEATURES & BENEFITS

- ✓ Off-the-shelf system
- ✓ Lightweight support solution
- ✓ No penetrative fixings and easy to level
- ✓ Semi-constructed offering reduces install time
- ✓ 300mm and 450mm bases available depending on load management required



### TECHNICAL DATA

- GRP base
- Rubber isolation mat
- Galvanised steel for corrosion resistance
- Internal & external options
- Height adjustable
- Two base options



#### SYSTEM DESIGN

The frame systems detailed are the most common configurations of each system for roof top applications. We will advise on selecting the best system and if any further design configurations are required. In addition to the weight and dimensions of the item to be supported, other useful information includes:



#### ACCESS

- Target heights
- Dimensions
- Obstructions



#### ROOF

- Structural limitations
- Roof fall and direction
- Obstruction details

# SURE-FOOT

## MODULAR SUPPORT SYSTEM



### STANDARD

Sure-Foot Standard Modular Frames are ideal for providing an effective support option for various types of roof plant.

Each modular frame comes complete with a 41x41mm strut, along with adjustable Sure-Foot leg assemblies.

An Extender Frame comes with two additional Sure-Foot leg assemblies to create custom solutions for supporting building services units.



### LONG-SPAN

Sure-Foot Long Span Modular Frames are suitable for the support of larger and wider building services units.

Each Long-Span frame comes with 2m, 82x41mm strut, along with adjustable Sure-Foot leg assemblies.

An Extender Frame comes with two additional Sure-Foot leg assemblies to create custom solutions for supporting building services units.

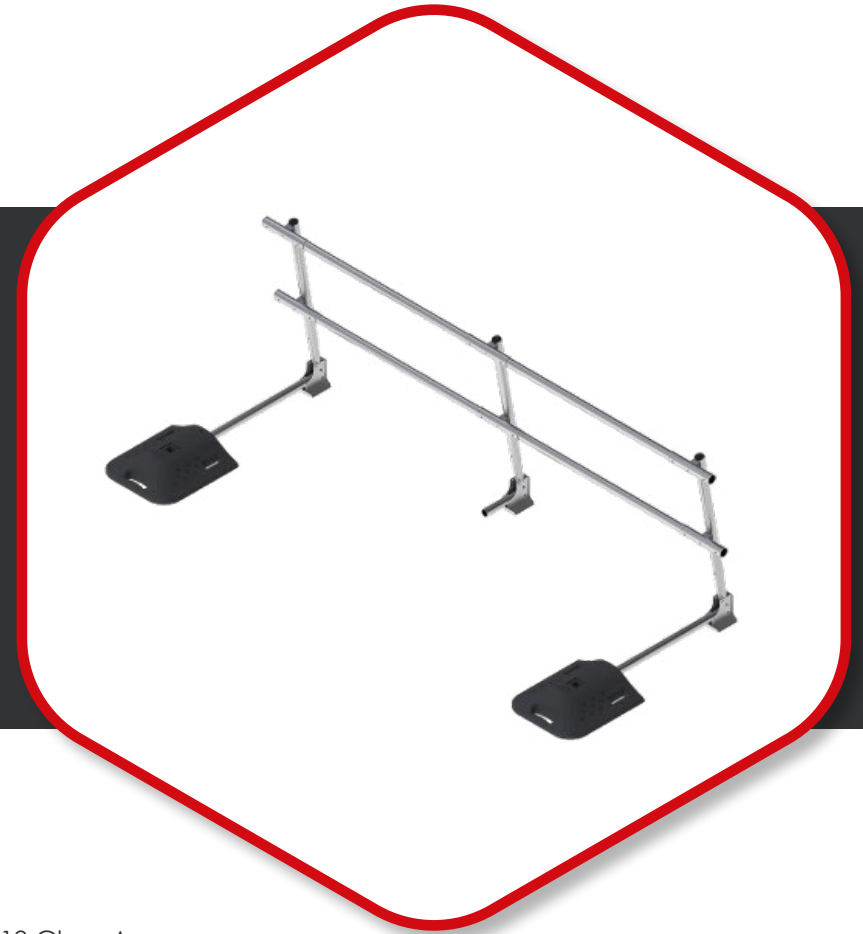


# EDGE PROTECTION SOLUTIONS

## PRO-GUARD FREE STANDING SYSTEM

### FEATURES & BENEFITS

- ✓ Pre-cut cross rails, purpose made fittings and fully adjustable uprights make for speedy installs
- ✓ Each protection system is engineered to the requirements of the roof and designed to comply with British Standards
- ✓ No penetrative fixings
- ✓ Weighing just 16.8kg per linear metre installed, this is one of the lightest on the market
- ✓ Semi-constructed offering reduced install time



### TECHNICAL DATA

- Fully compliant
- Galvanised steel for corrosion resistance
- Lightweight
- 4 Components
- Fully adjustable in height
- Multi-use
- Complies with BS EN 13374:2013 + A1:2018 Class A
- Complies with BS EN ISO 14122-3:2016

#### SYSTEM DESIGN

The guardrail systems detailed are the most common configurations of each system for roof top applications. We will advise on selecting the best protection system and if any further design configurations are required. Information that will help us to assist you includes:

#### ACCESS

- British Standards requirements
- Dimensions
- Corners
- Access
- Terminations

#### ROOF

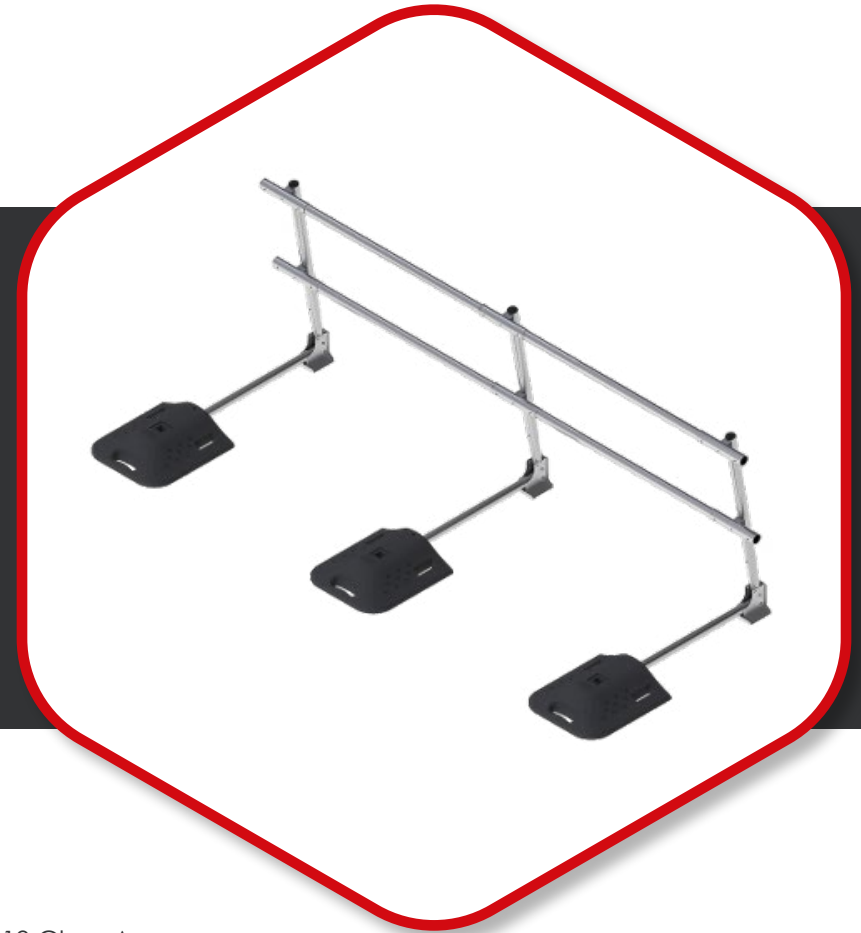
- Structural limitations
- Roof fall and direction
- Obstruction details

# EDGE PROTECTION SOLUTIONS

## PRO-GUARD FOLDING SYSTEM

### FEATURES & BENEFITS

- ✓ Pre-cut cross rails, purpose made fittings and fully adjustable uprights make for speedy installs
- ✓ Each protection system is engineered to the requirements of the roof and designed to comply with British Standards
- ✓ No penetrative fixings
- ✓ Weighing just 16.8kg per linear metre installed, this is one of the lightest on the market
- ✓ Semi-constructed offering reduced install time



### TECHNICAL DATA

- Fully compliant
- Galvanised steel for corrosion resistance
- Lightweight
- 4 Components
- Fully adjustable in height
- Multi-use
- Complies with BS EN 13374:2013 + A1:2018 Class A
- Complies with BS EN ISO 14122-3:2016

#### SYSTEM DESIGN

The guardrail systems detailed are the most common configurations of each system for roof top applications. We will advise on selecting the best protection system and if any further design configurations are required. Information that will help us to assist you includes:

#### ACCESS

- British Standards requirements
- Dimensions
- Corners
- Access
- Terminations

#### ROOF

- Structural limitations
- Roof fall and direction
- Obstruction details

# EDGE PROTECTION SOLUTIONS

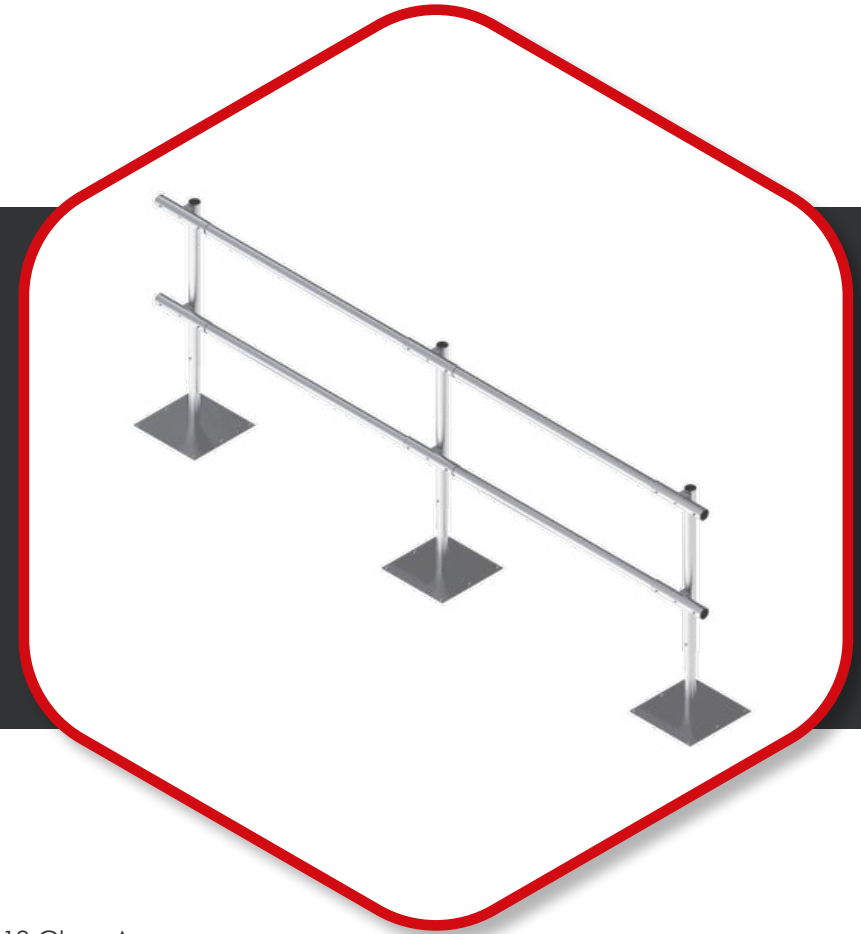
## PRO-GUARD SHEET FIXED SYSTEM

### FEATURES & BENEFITS

- ✓ Pre-cut cross rails, purpose made fittings and fully adjustable uprights make for speedy installs
- ✓ Each protection system is engineered to the requirements of the roof and designed to comply with British Standards
- ✓ No penetrative fixings
- ✓ Weighing just 7.9kg per linear metre installed, this is one of the lightest on the market
- ✓ Semi-constructed offering reduced install time

### TECHNICAL DATA

- Fully compliant
- Galvanised steel for corrosion resistance
- Lightweight
- 4 Components
- Fully adjustable in height
- Multi-use
- Complies with BS EN 13374:2013 + A1:2018 Class A
- Complies with BS EN ISO 14122-3:2016



#### SYSTEM DESIGN

The guardrail systems detailed are the most common configurations of each system for roof top applications. We will advise on selecting the best protection system and if any further design configurations are required. Information that will help us to assist you includes:



#### ACCESS

- British Standards requirements
- Dimensions
- Corners
- Access
- Terminations



#### ROOF

- Structural limitations
- Roof fall and direction
- Obstruction details

# PV SOLAR SYSTEMS

In a world where sustainable choices shape our future, Alumasc Sustainable Solar has been developed into unique systems, offering innovative technology with an unwavering commitment to environmental standards.



## BIO-SOLACELL BY ALUMASC

- Renewable energy source producing clean energy production
- Complying with new legislation for biodiversity enhancement, integrated with the PV array
- Climate adaptability and supporting global sustainability objectives
- Low operating costs and enhanced grid resilience increasing cost savings on electricity
- Energy independence which can be integrated with battery storage
- Scalability for various needs
- Sustainability by design



## SOLACELL BY ALUMASC

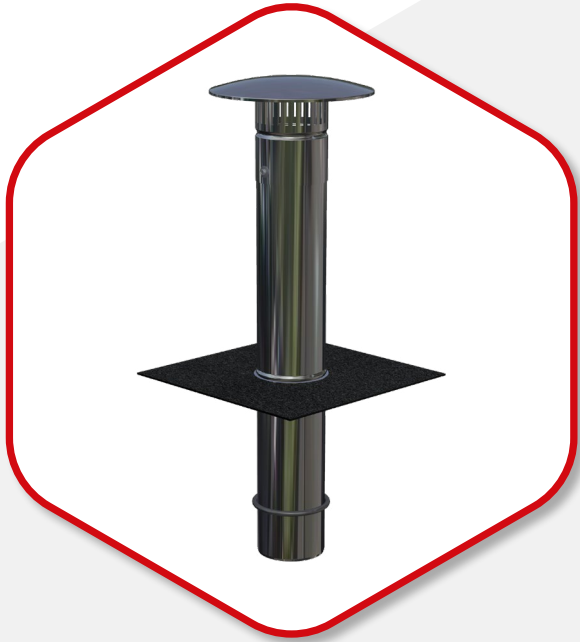
- Suitable for warm and cold flat roofing systems
- Non-penetrative system
- Pre-assembled rails with bitumen/PVC membrane retention strips which are heat welded to the primary waterproofing layer
- Ideal solution for new build and retrofitting on to all roof structures
- Eradicating the need for penetrations
- Considerably reduces risk to building structures





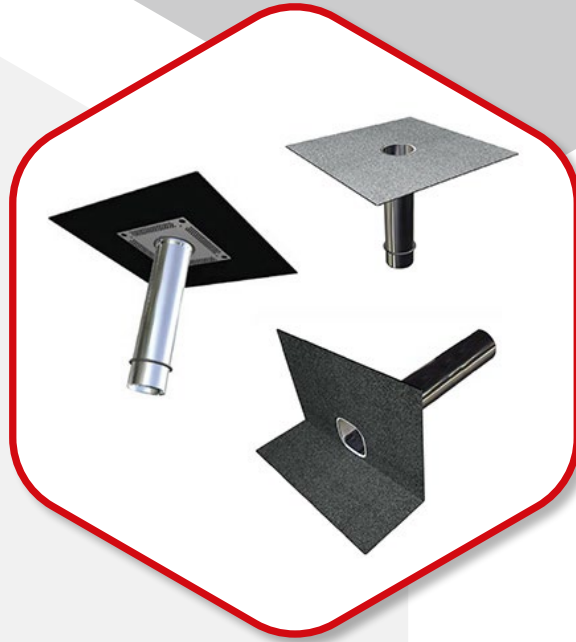
# ANCILLARY SOLUTIONS

## ADDITIONAL PRO PRODUCTS



### PRO VENT

Ventilation outlets for flat roof refurbishment and new build projects. The ProVent is used for the flashing of soil pipes which penetrate the roof construction and the roofing membrane.



### PRO DRAIN

Rainwater outlets for flat roof refurbishment and new build projects. ProDrain rainwater outlets are a range of versatile units that are available in a large range of sizes for new build and refurbishment applications.



### PRO FLASH

ProFlash is a lead-free flashing which can be used in areas where traditional lead flashing would be used such as chimney and abutment flashings, around rooflights, and pitched valley linings.


ProFlash can also be used to form a damp proof course and cavity trays in masonry walls.



# Your Complete Support and Service Solution


Design | Build | Support

[www.roof-pro.co.uk](http://www.roof-pro.co.uk)

 +44 (0)1744 648400

 [cad@roof-pro.co.uk](mailto:cad@roof-pro.co.uk)

 [roof-pro](https://www.linkedin.com/company/roof-pro)

 [roof\\_pro\\_](https://www.instagram.com/roof_pro_)