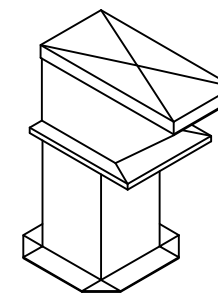
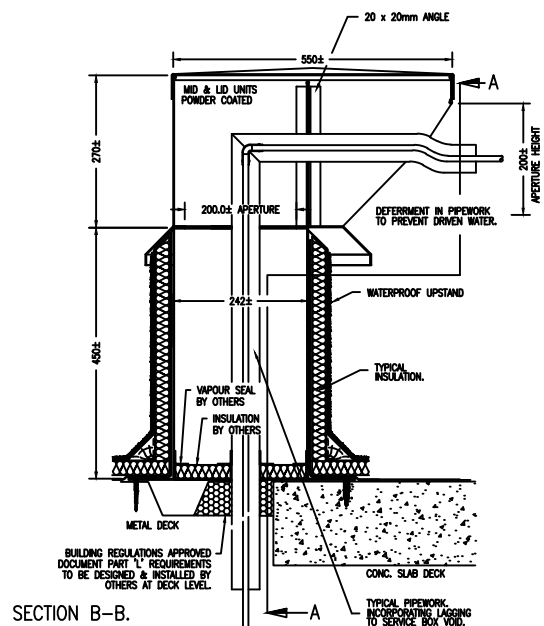
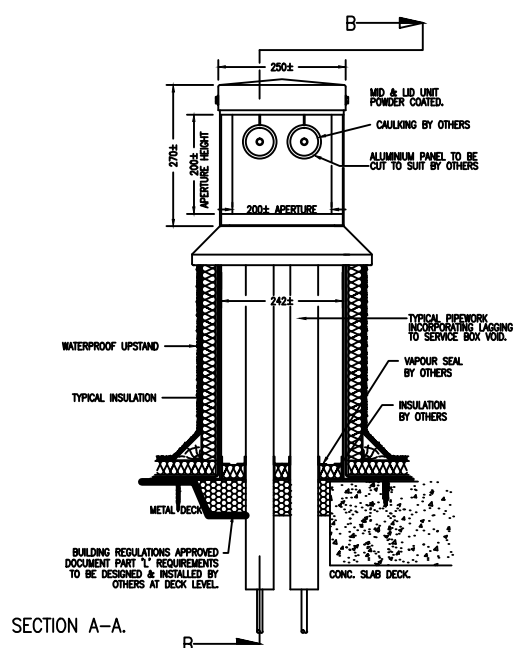
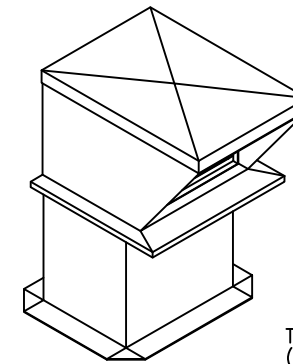
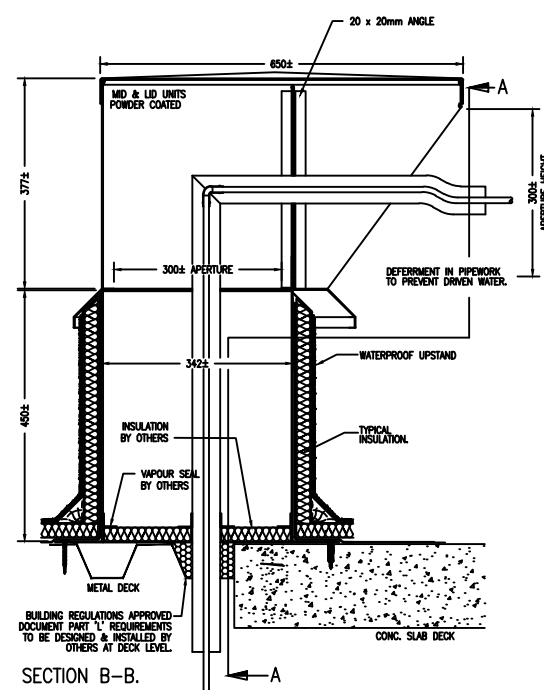
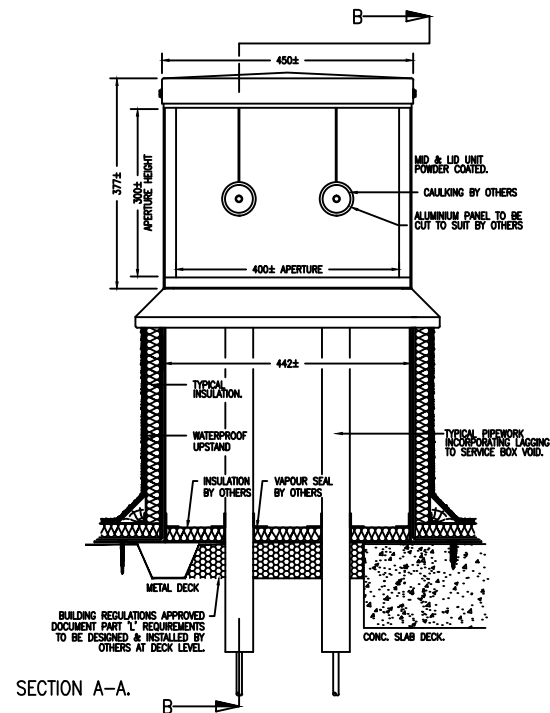
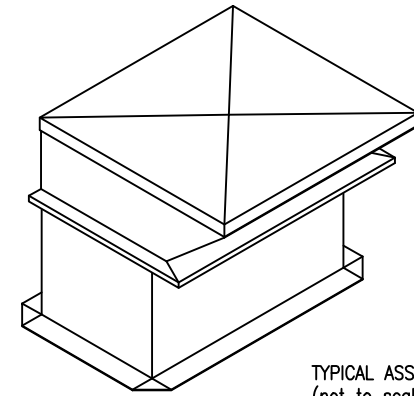
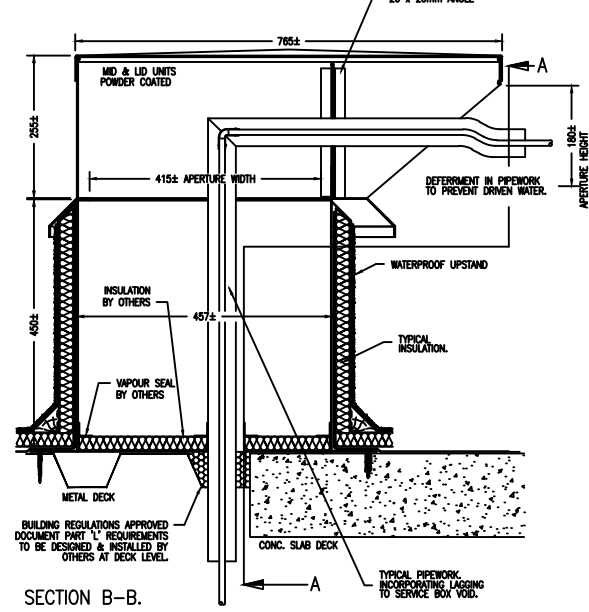
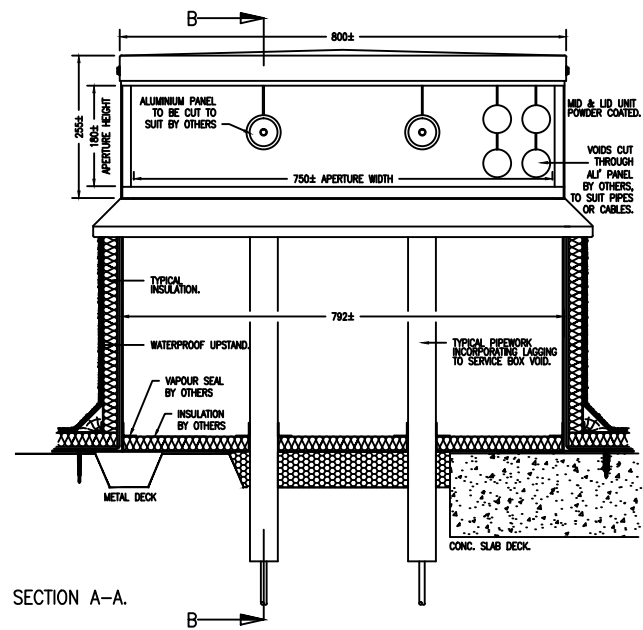


FIRST ANGLE PROJECTION — DO NOT SCALE — IF IN DOUBT ASK — ALL MEASUREMENTS IN MM — REMOVE ALL SHARP EDGES — TOLERANCES UNLESS STATED LINEAR±0.5 TOL/ ANGULAR±0.5 DEG.



REMARKS:
STANDARD PP-3 MADE FROM ALUMINIUM. THE MID & LID UNITS ARE POWDERCOATED BS 632 DARK ADMIRALTY GREY (BS381C632)
BESPOKE PP-3 MADE FROM ZINTEC STEEL, THE LID & MID UNIT ARE POWDERCOATED BS 632 DARK ADMIRALTY GREY (BS381C632), UNLESS OTHERWISE REQUESTED.
NON-STANDARD RAL COLOURS MAY INCUR ADDITIONAL CHARGES. SHOULD THE ALUMINIUM OPTION BE REQUESTED THE BASE UNIT WILL BE MADE FROM ZINTEC STEEL.

IT IS IMPORTANT THE PIPE ENGINEER DOES NOT CREATE A BACK FALL TOWARDS THE RISER, IF IT IS NECESSARY TO HAVE A FALL TOWARDS THE RISER PROVIDED A "DRIP EDGE" BEFORE THE PANEL, THE ALUMINIUM PULL OUT PANEL SHOULD BE TRIMMED TIGHT TO SUIT THE "PROFILE" EXITING THE PP-3. EXPANDING FOAM OR RUBBER GAITER (BY OTHERS) CAN BE USED TO SEAL THE GAP. A VAPOUR SEAL AND THERMAL INSULATION SHOULD BE MADE AT DECK LEVEL TO PREVENT CONDENSATION. REQUEST AT ORDER STAGE FOR BASE UNIT TO BE PRIMED FOR BITUMINOUS APPLICATIONS, OTHERWISE THE UNIT WILL BE DELIVERED NOT PRIMED.

BESPOKE PP-3 SIZES & MULTIPLE APERTURES AVAILABLE UPON REQUEST FROM ROOF-PRO LTD.

© COPYRIGHT ROOF-PRO

ISSUE 10	
ISSUE 9	
ISSUE 8	
ISSUE 7	
ISSUE 6	
ISSUE 5	
ISSUE 4	
ISSUE 3	
ISSUE 2	01/03.16
ISSUE 1	11/04/11



Polwell Lane, off Station Road
Burton Latimer NN15 5PS, UK
Tel: +44 (0)1744 648 400
Email: cad@roof-pro.co.uk
Website: www.roof-pro.co.uk

PRODUCT:
RP-PP3 STANDARD RANGE
PIPE PENETRATION BOXES

MATERIAL/FINISH:

ALUMINIUM

SCALE @ A3:	N.T.S.
DRAWN BY:	CAD
DATE:	11/04/11
CHECKED BY:	CAD
DATE:	11/04/11
DRAWING No:	FT-001