

FIRST ANGLE PROJECTION — DO NOT SCALE — IF IN DOUBT ASK — ALL MEASUREMENTS IN MM — REMOVE ALL SHARP EDGES — TOLERANCES UNLESS STATED LINEAR±0.5 TOL/ ANGULAR±0.5 DEG.

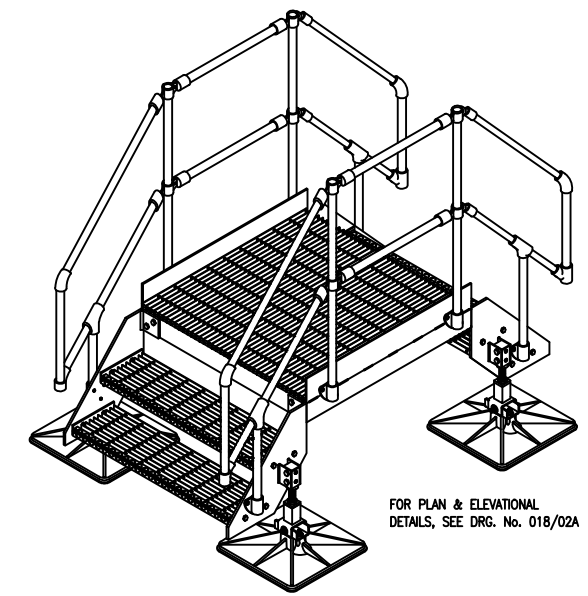
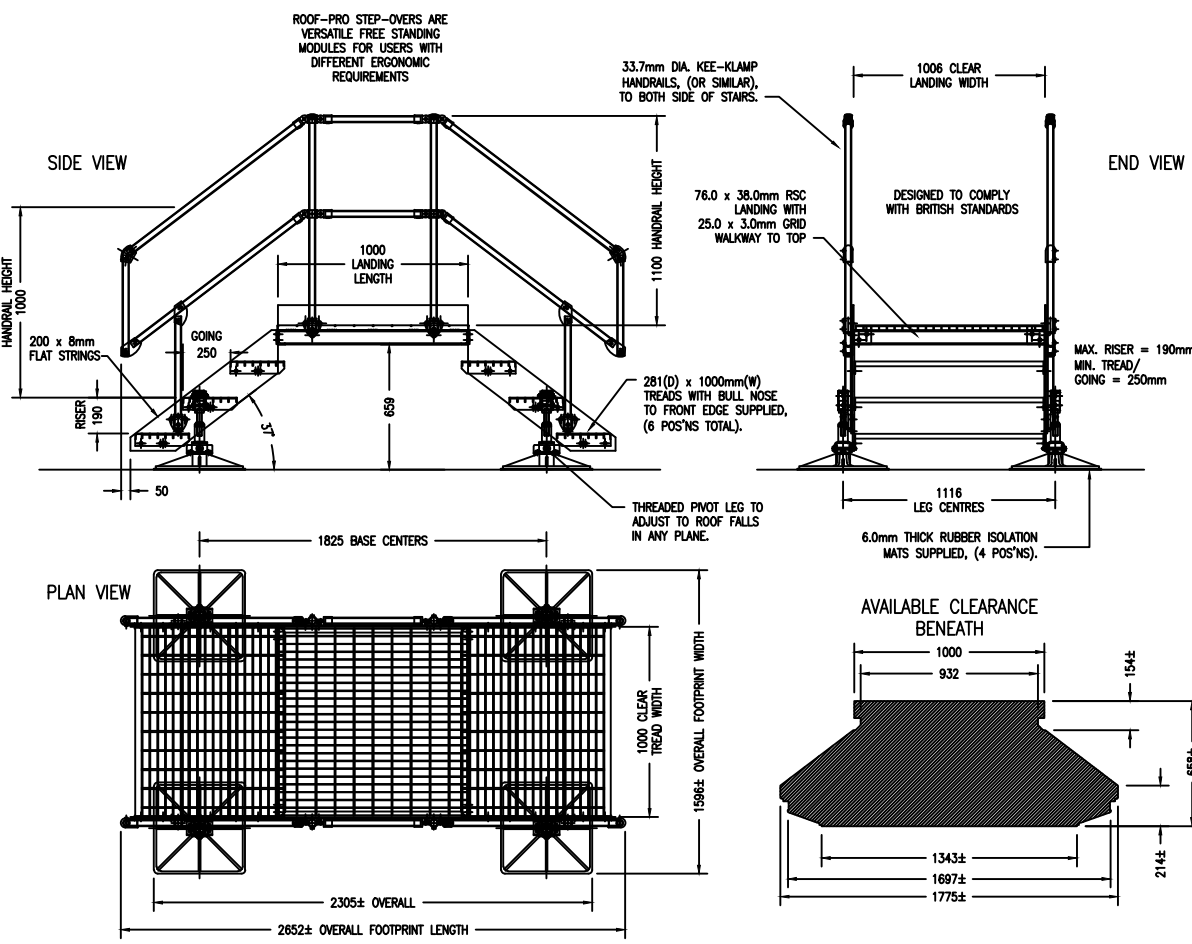
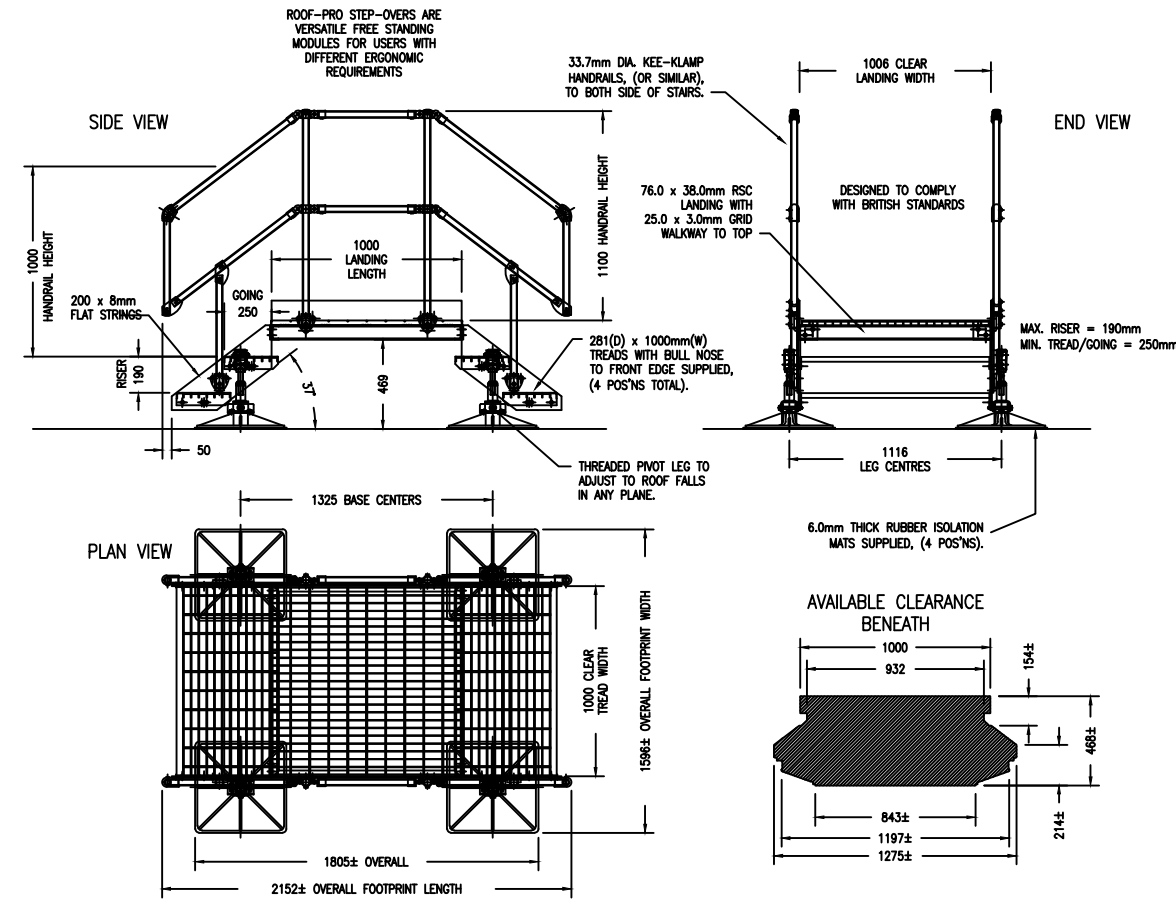
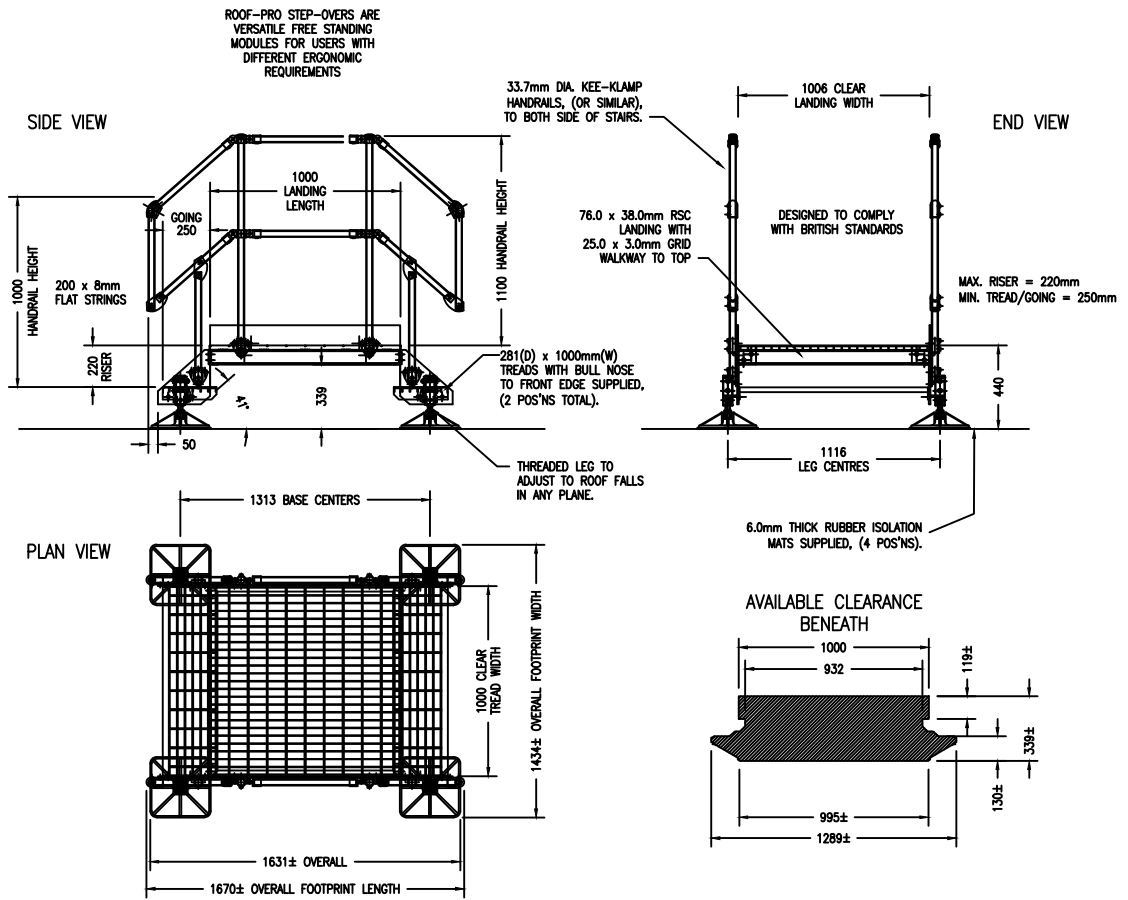
REMARKS:

DESIGNED TO COMPLY WITH BRITISH STANDARDS BS 5395-1:2000, BS 5395-3:1985, BS 4592-1:1995 & BUILDING REGULATIONS APPROVED DOCUMENT K.

SUPPLIED FLAT PACKED, BOLTED TOGETHER ON SITE BY OTHERS.
 APPROXIMATE ASSEMBLY TIME = 45mins
 STEP-OVER WEIGHT = VARIES BY UNIT
 1-1 STEPOVER 153kg
 1-2 STEPOVER 205kg
 1-3 STEPOVER 257kg
 1-4 STEPOVER 309kg
 (WEIGHT SHOWN IS APPROXIMATE).

CUSTOM SIZES AVAILABLE, CONTACT ROOF-PRO FOR FURTHER INFORMATION.

© COPYRIGHT ROOF-PRO



FOR PLAN & ELEVATIONAL DETAILS, SEE DRG. No. 018/02A

ISSUE 10	
ISSUE 9	
ISSUE 8	
ISSUE 7	
ISSUE 6	
ISSUE 5	
ISSUE 4	
ISSUE 3	
ISSUE 2	02.03.16
ISSUE 1	28.04.11

ROOF-PRO
 ROOFTOP MANAGEMENT SYSTEMS

Polwell Lane, off Station Road
 Burton Latimer NN15 5PS, UK
 Tel: +44 (0)1744 648 400
 Email: cad@roof-pro.co.uk
 Website: www.roof-pro.co.uk

PRODUCT:
 STEP OVER STAIRS
 TYPICAL PRODUCT RANGE

MATERIAL/FINISH:
 MILD STEEL
 HOT DIP GALVANISED

SCALE @ A3:	N.T.S.
DRAWN BY:	CAD
DATE:	2804/11
CHECKED BY:	CAD
DATE:	28/04/11

DRAWING No: FT-006